

## **GELNETT & ASSOCIATES INSTALLS MULTIPLE ELECTRO-VOICE® LOUDSPEAKER LINES AT NEW MONTANDON, PN, WORSHIP CENTER**

**Montandon, PA (September 25, 2003):** Gelnett & Associates, based out of Northumberland, Pennsylvania, recently completed an extensive sound reinforcement installation at a new worship center in nearby Montandon, PA. The installation at the new church included numerous Electro-Voice loudspeaker lines, along with an array of top quality audio/visual equipment. What makes this project particularly remarkable is the fact that over a quarter of a million dollars was invested in an a/v system for a church in a town of approximately 12,000 people. Gelnett & Associates' work at Montandon seems to typify a trend towards investing in technology to enhance contemporary worship on a smaller scale than we associate with suburban 'mega churches'. This general trend has seen church design, installation and production enter an era of unprecedented enthusiasm for technology that is in direct proportion to the expectations of new, young, growing congregations around the United States. Smaller communities and congregations are now looking for the kind of high quality sound solutions that only professional-grade manufacturers like EV can provide.



***3 White Electro-Voice FRX-940 loudspeakers cover the sanctuary at Montandon***

Another detail in this particular installation reflects the changing demands put upon new community worship centers: to maintain the utility of a multi-purpose space without compromising the worship experience. The sanctuary at Montandon will be called upon to host elaborate holiday productions, various styles of praise music, larger choirs, and various sports and recreational pursuits. As Scott Gelnett describes, the contemporary church audio/video installation contractor now has a new set of challenges that arise from the expectations placed upon worship centers by contemporary worship communities. Having completed well over 500 church installations, Gelnett considered the changing times in his

field, and how a manufacturer like EV continues to offer sound solutions in step with size and shape of modern worship:

“Ground broke on the church in May of 2002, and construction was completed in June 2003. The facility has a multi-purpose sanctuary – it doubles as a gymnasium – along with classrooms, a nursery, greeting rooms, choir rooms, foyers, etc. The construction of this kind of church in this area reflects the changing times in modern worship. For a town of this size in a relatively isolated area to have a church like this with these amenities is remarkable. The church has been completed for just three months, yet five hundred people come to worship each Sunday.” Gelnett describes the multi-purpose sanctuary as a “Gymatorium.” The room is the size of a gymnasium with a basketball court, a rectangular room of about 96 feet by 72 feet with a stage centered up against a wall at one end. The ceiling is about 25 feet high. Gymnasiums are, of course, notoriously problematic from an acoustical perspective. This necessitates a systematic approach to installing sound reinforcement materials and equipment that involves coordinating architectural and acoustic elements precisely, and within the perimeters of the budget and schedule. To get the job done right, Gelnett & Associates worked with (EV’s) Jim Long, who used EASE™ modeling software for the speaker installation design.



*The “Gymatorium” - meeting the demands of the contemporary worship community*

Gelnett continued: “The church was designed by McKnight & Hosterman Architects Inc, of Grove City, OH, who specializes in this type of facility. We employed the skills of acoustical consultant H.F. Kingsbury, P.E. to ensure we would have a space that could be used as a gym, but still

sounded like a sanctuary, with no compromises in either direction. The congregation doesn't want to worship in a space that looks, feels and sounds like a gymnasium, but to have the gym on hand for other activities is obviously favorable too. To design a building and an a/v system that allows this transition to take place seamlessly is a priority that reflects the new era in church design and construction, and how both the church installation industry, not to mention the expectations of congregations around the nation, are changing with the times. The acoustical consultant took the blueprints and made recommendations as far as slanting walls, angling balconies, installing sound absorption, changing the ceiling and the stage, and modifying the heating and cooling systems to ensure a quiet environment. Every recommendation Kingsbury made was implemented. As a result, the room sounds outstanding. Using Kingsbury's recommendations we worked together to make the room sound far better than if just a couple of the suggested measures had been taken. The stage, which is built into one of the sidewalls, is a 50-foot opening that recesses about 30 foot. Again, in a fashion similar to a high school gymnasium, the stage is protected during the week by large curtains to protect the choir risers and piano. It also features rear projection video screens, used primarily for PowerPoint™ and hymn lyrics. Also, there are no echo or feedback problems, so both the congregation and the musicians are happy. The extra investment – especially in terms of acoustic paneling – has resulted in a win-win situation.”



# Feature Story

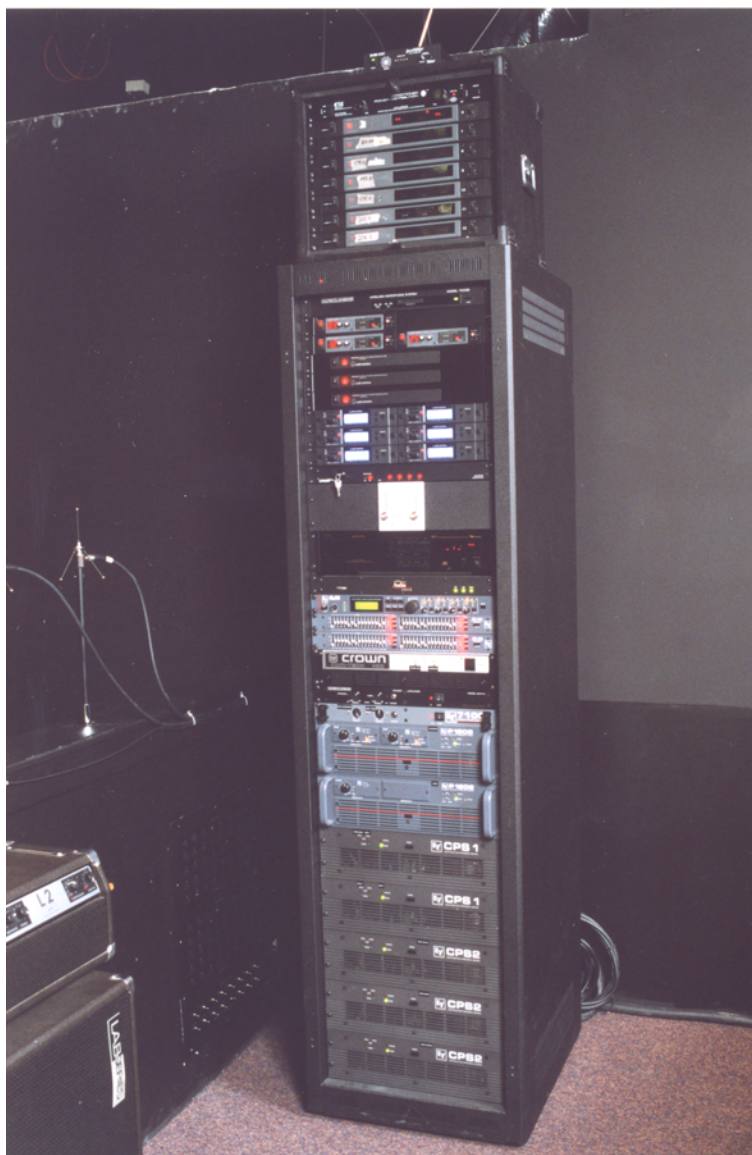
Gelnett described the multiple Electro-Voice speaker lines that helped bridge the gap between gymnasium and sanctuary: “I had used EV FRX loudspeakers in other installations and was impressed. The Montandon church puts on a lot of drama productions and often uses up to 18 or 20 wireless mics. What I’ve learned in working with so many churches that feature regular drama productions is that you need to use a speaker that keeps all the volume out in the audience rather than on the stage. I initially selected the FRX boxes due to prior successes with them in reverberant spaces, drew up a design for their placement, and then sent my diagrams to Jim Long to incorporate into an EASE model. He adjusted my work to specify the exact tilt and angle of each speaker, giving me a technically precise second opinion to my plans. The FRX-940 (90-degree x 40-degree) speakers are in a left/center/right mono configuration. We used EV QRx 112/75 speakers that are placed at extreme left and extreme right, for music playback in stereo, such as background music tracks for praise songs or soloists. We’re also using two of the QRx-218 subwoofers, fed off of an auxiliary send exclusively for music playback. We selected EV FRi 2082s for choir monitors, mounted over the choir facing down for choir playback. We have them suspended about 16 feet above the choir. This particular choir uses background music tracks to accompany them each week. As the FRis are facing down we can play them loud enough for the choir, but not have them interfere with the audience mix.”

“We used an Sx80 as a que monitor for a separate monitor console. The Sx80 is mounted next to the monitor operator so he can hear the 6 different monitor mixes on stage. We’re also using a Telex intercom system. The sound operator has an intercom, the stage monitor has an intercom, as do the video and lighting booths, all the camera locations, the backstage and choir room. They’re putting on productions that require almost as much organization as a mini Broadway play. There are about 10 stations with headsets and beltpacks to help keep things organized.”

“We’re using EV EQ-215 dual equalizers for the monitor systems; (3) CPS2 power amps; (2) P1202s; (2) CPS1s; EVID 8.2 and 4.2 loudspeakers in the lobby area; EV Dx38 processing. The whole system has the capability to do whatever is required of it, and still stay really clean. We also have a Telex hard of hearing system, the personal hearing assistance unit SM1, (8) SR50 receivers, and a Telex cassette duplication system. Having this much technology and equipment to allow the service to run smoothly and efficiently enriches the whole worship experience for the congregation.”

Gelnett continued: “This whole approach to church construction and a/v installation seems to be based around allowing these spaces to grow.

Facilities like this have the potential to grow from their existing structure to a larger, independent sanctuary with a separate multi-purpose room. The paradox is that if you don't start with a multi-purpose room, a space that caters to the various demands of the modern worship community, it's often more difficult to grow to the point where you can afford a new sanctuary. To start with a multi-purpose space and equip it with all the attention to detail you would in a room with a single purpose, again really creates a 'win win' situation."



*The amplification & effects rack*

Gelnett concluded: "Church installation is our main business. We've done hundreds and hundreds. I've seen the change in church worship services in recent years go from a traditional style to a contemporary blended style.

As a result of these changes, sound contractors and manufacturers have changed to meet these demands. These multi-purpose rooms seem to characterize changing times in church design and construction. Essentially, making a commitment to quality a/v equipment from the start reflects a commitment to growth. The members of the congregation have responded to the way things look and sound in a very positive way. Another satisfied client!"

## Telex/Electro-Voice Equipment List: Montandon Crossroads Church of the Nazarene:

1 EV	7100	AMPLIFIERS
2 EV	FRX+940-WH	SPEAKERS
2 EVI	CPS 1	AMPLIFIERS
3 EVI	CPS 2	AMPS
1 EVI	DX38	PROCESSOR
2 EVI	EQ215	DUAL EQ
2 EVI	EVID4.2TW	SPEAKERS
2 EVI	FRI-2082WHT	MONITORS
2 EVI	FRX+640-WH	SPEAKERS
2 EVI	M-212	MODULES
1 EVI	M-218S	MODULES
2 EVI	P1202	AMPS
2 EVI	QRX212/75-BLK	SPEAKERS
2 EVI	QRX-218S-BLK	SUBS
1 EVI	SX-80B	SPEAKER
6 TELEX	BP-2002	BELTPPACK
8 TELEX	HR-1	HEADSETS
3 TELEX	HS-6A	HEADSET
7 TELEX	ME/25/2	CABLES
7 TELEX	ME-25/2	CABLES
1 TELEX	MS2002	MASTER
1 TELEX	SM-1	HEARING SYSTEM
4 TELEX	SR-50	RECEIVERS
1 TELEX	SS2000U	SUBSTATION
3 TELEX	WM2000	HEADSET STATION
8 TELEX	WP-3	WALL PLATES

For more information on these and other Telex/Electro-Voice products, please visit [www.telex.com](http://www.telex.com) & [www.electrovoice.com](http://www.electrovoice.com)

(more)

# Feature Story

**Pro Audio Group**  
EV • Telex • Midas • Klark Teknik  
Dynacord • RTS • University Sound

Electro-Voice® is a professional audio brand of Telex Communications, Inc., a leader in the design, manufacture and marketing of sophisticated audio, wireless, multimedia, aircraft, broadcast and communications equipment for commercial, professional and industrial customers. Telex Communications markets its products in more than 80 countries under the brands EV®, Telex®, RTS™, Dynacord®, Midas®, Klark Teknik®, University® and others.

**James Edlund**  
**Public Relations Manager**  
**Telex Communications, Inc.**  
**12000 Portland Ave. South**  
**Burnsville, MN 55337**  
**Phone: 952-736-3901**  
**Fax: 952-736-4582**  
**E-mail: [James.Edlund@telex.com](mailto:James.Edlund@telex.com)**

**Guy Low**  
**Public Relations Writer**  
**Telex Communications, Inc.**  
**12000 Portland Ave. South**  
**Burnsville, MN 55337**  
**Phone: 952-736-3935**  
**Cell: 612-710-0829**  
**E-mail: [Guy.Low@telex.com](mailto:Guy.Low@telex.com)**

**###**